

EUNOS MRT STATION
3 MINS WALK

SIMS AVENUE



CHANGI ROAD

For illustration purposes only.

SITE PLAN

WEST PARC

- Family Lagoon
- Water Beds
- Body Massage Jets
- Foot Massage Jets
- Bubble Jets
- Kids' Water Jets
- Grill & Dine Island
- Kids' Water Playground
- Island Party Pavilion
- Kids' Party Pavilion
- Junior Glamping Lawn
- Beanbag Lounge
- Palm Pool
- Cosy Lounge
- Lagoon Deck

GRAND PARC

- Lantern Isle
- Signature Arrival Court
- Majestic Tree Atrium
- Atrium Deck
- Sunken Party Lounge
- Reflective Pond
- Grill & Dine Island
- Atrium Lounge
- Koi Pond Lounge
- Koi Pond
- Garden Lounge
- Lantern Promenade
- Firefly Promenade
- Cabana Park
- Bicycle Lift

EAST PARC

- 50m Lap Pool
- Jacuzzi Pools
- Foot Reflexology Pavilion
- Lawn
- Wi-Fi Pavilion
- Parc Clubhouse
- Poolside Dining Verandah
- Pool Deck
- Luxe Cabanas
- Sun Beds
- Pool Pavilion
- Lantern Promenade
- Fitness Suite
- Changing Rooms
- Lawn Settee
- Hammock Park

OTHERS

- A Jogging Trail
- B Guard Post
- C Vehicular Ingress & Egress
- D Pedestrian Side Gate

BASEMENT

- E Shoppes @ Parc Esta
- F Management Office
- G Transformer Room
- H Substation
- I Bin Centre



SCHEMATIC DIAGRAM

| BLOCK 914 SIMS AVENUE (S)408973 | | | | | | | | | | BLOCK 916 SIMS AVENUE (S)408974 | | | | | | | | BLOCK 900 SIMS AVENUE (S)408966 | | | | | | | | | BLOCK 902 SIMS AVENUE (S)408967 | | | | | | | | | |
|---|--|--|--|--|--|--|--|--|--|---|--|--|--|--|--|--|--|---|--|--|--|--|--|--|--|--|---|--|--|--|--|--|--|--|--|--|
| [Grid with building numbers 61-69 and unit types] | | | | | | | | | | [Grid with building numbers 70-78 and unit types] | | | | | | | | [Grid with building numbers 1-9 and unit types] | | | | | | | | | [Grid with building numbers 10-18 and unit types] | | | | | | | | | |
| [Grid with building numbers 61-69 and unit types] | | | | | | | | | | [Grid with building numbers 70-78 and unit types] | | | | | | | | [Grid with building numbers 1-9 and unit types] | | | | | | | | | [Grid with building numbers 10-18 and unit types] | | | | | | | | | |
| [Grid with building numbers 61-69 and unit types] | | | | | | | | | | [Grid with building numbers 70-78 and unit types] | | | | | | | | [Grid with building numbers 1-9 and unit types] | | | | | | | | | [Grid with building numbers 10-18 and unit types] | | | | | | | | | |

- TYPE A1/A2
1-Bedroom
- TYPE AD1/AD2/AD3-P/AD4-P
1-Bedroom + Study
- TYPE B1/B2/B3/B4
2-Bedroom
- TYPE BP1/BP2/BP3/BP4/BP5
2-Bedroom Premium
- TYPE BD1/BD2/BD3
2-Bedroom + Study
- TYPE C1/C2/C3
3-Bedroom
- TYPE CU1/CU2
3-Bedroom + Study
- TYPE CP1/CP2
3-Bedroom Premium
- TYPE D1/D2
4-Bedroom
- TYPE DP
4-Bedroom Premium
- TYPE E
5-Bedroom

| BLOCK 912 SIMS AVENUE (S)408972 | | | | | | BLOCK 910 SIMS AVENUE (S)408971 | | | | | | BLOCK 908 SIMS AVENUE (S)408970 | | | | | | BLOCK 906 SIMS AVENUE (S)408969 | | | | | | BLOCK 904 SIMS AVENUE (S)408968 | | | | | |
|---|--|--|--|--|--|---|--|--|--|--|--|---|--|--|--|--|--|---|--|--|--|--|--|---|--|--|--|--|--|
| [Grid with building numbers 52-60 and unit types] | | | | | | [Grid with building numbers 44-51 and unit types] | | | | | | [Grid with building numbers 36-43 and unit types] | | | | | | [Grid with building numbers 28-35 and unit types] | | | | | | [Grid with building numbers 19-27 and unit types] | | | | | |
| [Grid with building numbers 52-60 and unit types] | | | | | | [Grid with building numbers 44-51 and unit types] | | | | | | [Grid with building numbers 36-43 and unit types] | | | | | | [Grid with building numbers 28-35 and unit types] | | | | | | [Grid with building numbers 19-27 and unit types] | | | | | |
| [Grid with building numbers 52-60 and unit types] | | | | | | [Grid with building numbers 44-51 and unit types] | | | | | | [Grid with building numbers 36-43 and unit types] | | | | | | [Grid with building numbers 28-35 and unit types] | | | | | | [Grid with building numbers 19-27 and unit types] | | | | | |
| [Grid with building numbers 52-60 and unit types] | | | | | | [Grid with building numbers 44-51 and unit types] | | | | | | [Grid with building numbers 36-43 and unit types] | | | | | | [Grid with building numbers 28-35 and unit types] | | | | | | [Grid with building numbers 19-27 and unit types] | | | | | |



1-Bedroom

TYPE A1

39 sq m | 420 sq ft

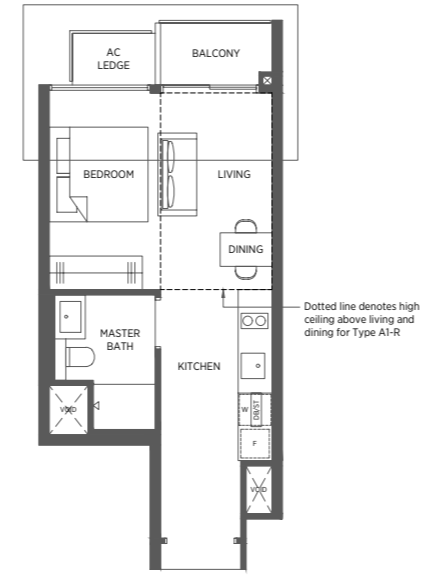
#02-06 to #17-06
#02-15 to #17-15
#02-20 to #17-20*
#02-53 to #17-53*
#02-66 to #17-66
#02-75 to #17-75

TYPE A1-R

48 sq m | 517 sq ft

#18-06
#18-15
#18-20*
#18-53*
#18-66
#18-75

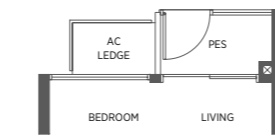
Incl. of 9 sq m | 97 sq ft of void area (high ceiling) above living & dining



TYPE A1-P

39 sq m | 420 sq ft

#01-06
#01-15
#01-20*
#01-53*
#01-66
#01-75



TYPE A2

42 sq m | 452 sq ft

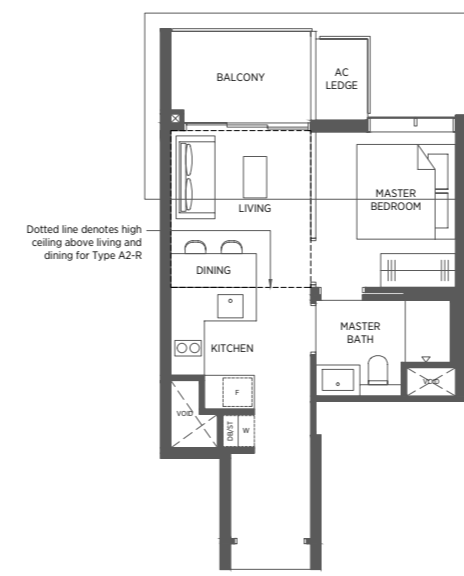
#02-05 to #17-05
#02-14 to #17-14
#02-21 to #17-21*
#02-54 to #17-54*
#02-65 to #17-65
#02-74 to #17-74

TYPE A2-R

51 sq m | 549 sq ft

#18-05
#18-14
#18-21*
#18-54*
#18-65
#18-74

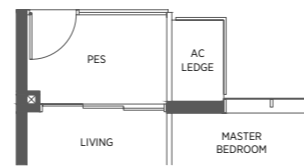
Incl. of 9 sq m | 97 sq ft of void area (high ceiling) above living & dining



TYPE A2-P

42 sq m | 452 sq ft

#01-05
#01-14
#01-21*
#01-54*
#01-65
#01-74



1-Bedroom + Study

TYPE AD1

48 sq m | 517 sq ft

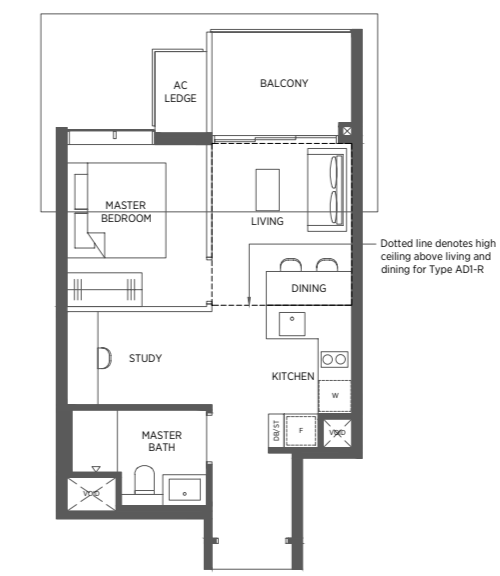
#02-52 to #17-52*
#02-67 to #17-67
#02-76 to #17-76

TYPE AD1-R

57 sq m | 614 sq ft

#18-52*
#18-67
#18-76

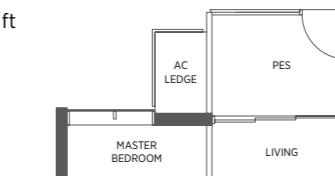
Incl. of 9 sq m | 97 sq ft of void area (high ceiling) above living & dining



TYPE AD1-P

48 sq m | 517 sq ft

#01-52*
#01-67
#01-76



TYPE AD3-P

49 sq m | 527 sq ft

#01-01
#01-10
#01-25*
#01-28
#01-36
#01-44
#01-58*
#01-61



* Denotes mirror image

Area includes a/c ledge, balcony and void area (high ceiling). The plans are subject to change as may be required or approved by the relevant authorities. Areas are approximate measurements only and are subject to final survey. Plans are not drawn to scale and do not form part of the contract.

TYPE AD2

49 sq m | 527 sq ft

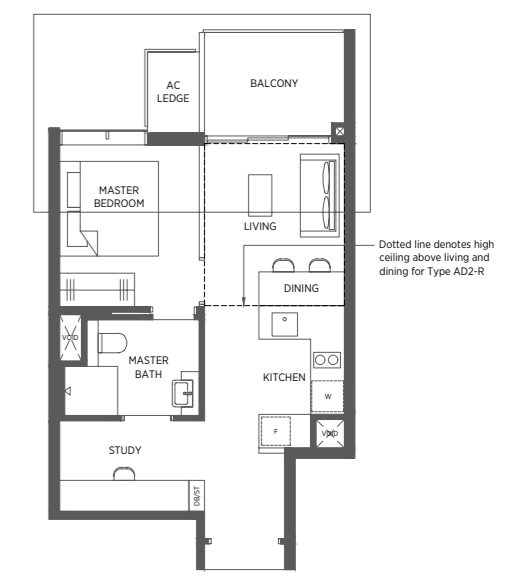
#02-07 to #17-07
#02-16 to #17-16
#02-19 to #17-19*

TYPE AD2-R

58 sq m | 624 sq ft

#18-07
#18-16
#18-19*

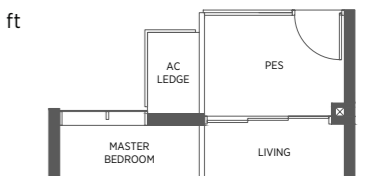
Incl. of 9 sq m | 97 sq ft of void area (high ceiling) above living & dining



TYPE AD2-P

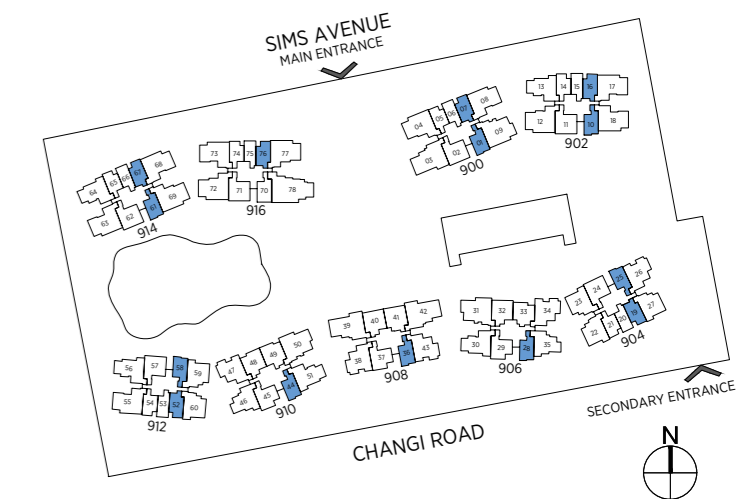
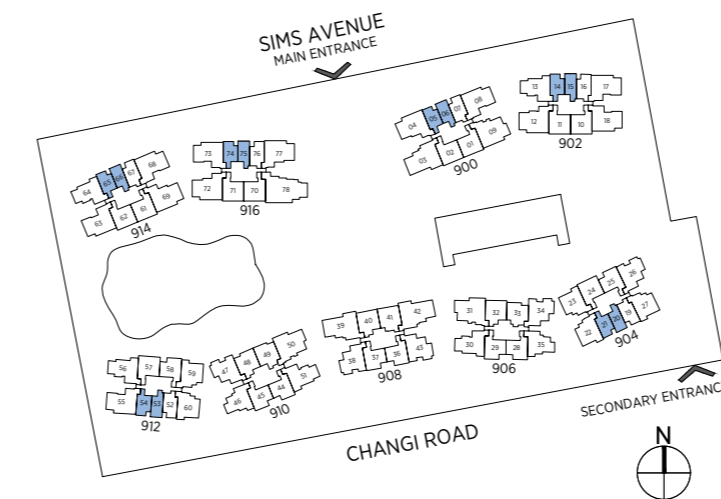
49 sq m | 527 sq ft

#01-07
#01-16



* Denotes mirror image

Area includes a/c ledge, balcony and void area (high ceiling). The plans are subject to change as may be required or approved by the relevant authorities. Areas are approximate measurements only and are subject to final survey. Plans are not drawn to scale and do not form part of the contract.



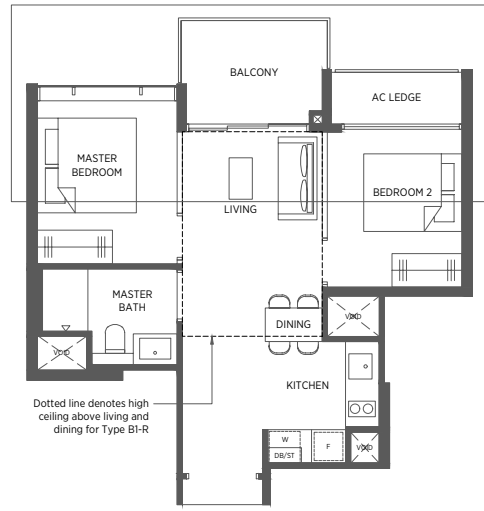
2-Bedroom

TYPE B1 TYPE B1-R

54 sq m | 581 sq ft 65 sq m | 700 sq ft

#02-33 to #17-33 #18-33

Incl. of 11 sq m | 118 sq ft of void area (high ceiling) above living & dining

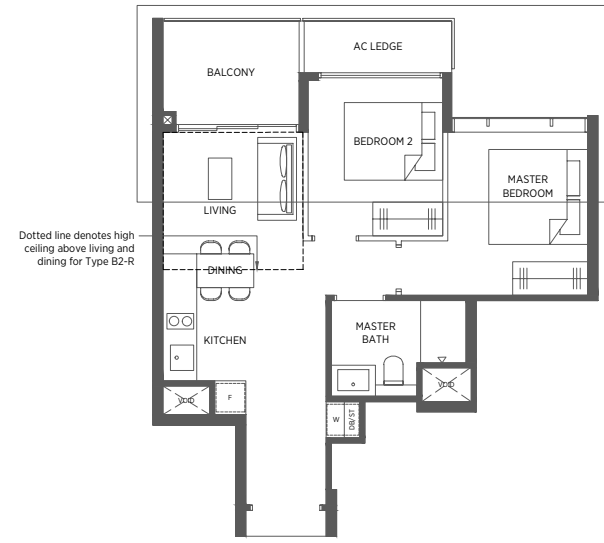


TYPE B2 TYPE B2-R

56 sq m | 603 sq ft 64 sq m | 689 sq ft

#02-32 to #17-32 #18-32

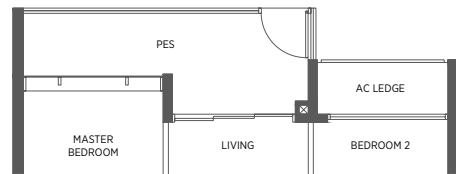
Incl. of 8 sq m | 86 sq ft of void area (high ceiling) above living & dining



TYPE B1-P

58 sq m | 624 sq ft

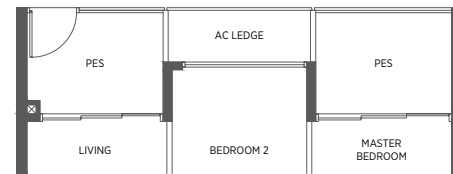
#01-33



TYPE B2-P

61 sq m | 657 sq ft

#01-32



2-Bedroom

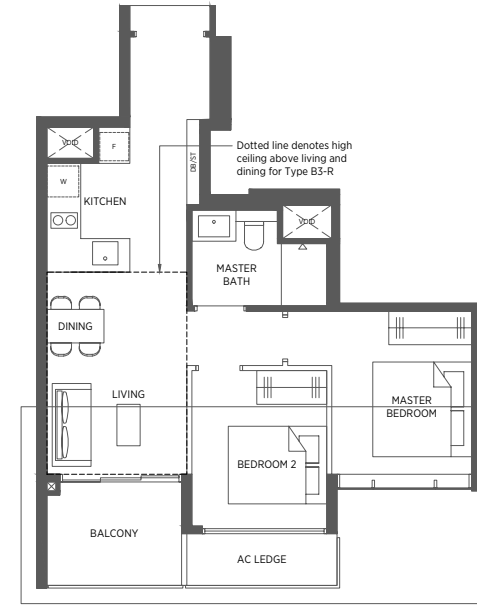
TYPE B3 TYPE B3-R

59 sq m | 635 sq ft 70 sq m | 753 sq ft

#02-28 to #17-28*
#02-29 to #17-29
#02-36 to #17-36*
#02-37 to #17-37
#02-44 to #17-44*
#02-45 to #17-45

#18-28*
#18-29
#18-36*
#18-37
#18-44*
#18-45

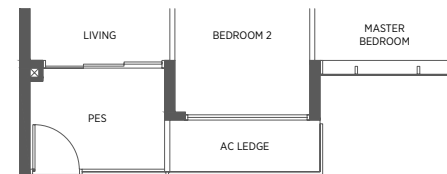
Incl. of 11 sq m | 118 sq ft of void area (high ceiling) above living & dining



TYPE B3-P

59 sq m | 635 sq ft

#01-29
#01-37
#01-45



TYPE B4 TYPE B4-R TYPE B4-R1

59 sq m | 635 sq ft 69 sq m | 743 sq ft 70 sq m | 753 sq ft

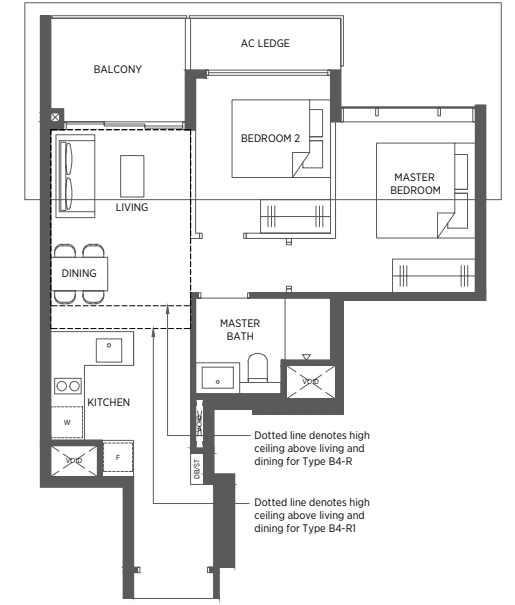
#02-24 to #17-24
#02-25 to #17-25*
#02-58 to #17-58*

#18-25*
#18-58*

Incl. of 10 sq m | 108 sq ft of void area (high ceiling) above living & dining

#18-24

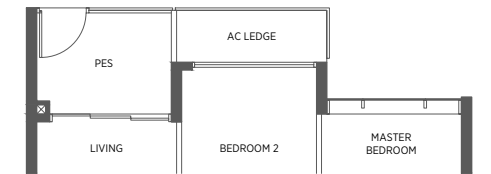
Incl. of 11 sq m | 118 sq ft of void area (high ceiling) above living & dining



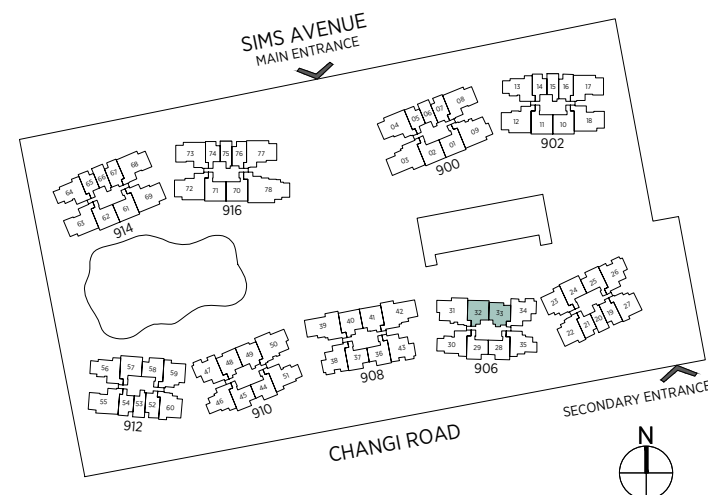
TYPE B4-P

59 sq m | 635 sq ft

#01-24

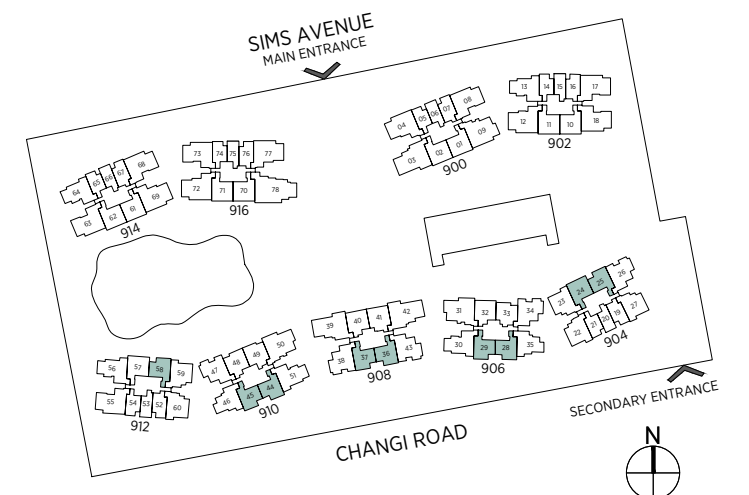


Area includes a/c ledge, balcony and void area (high ceiling). The plans are subject to change as may be required or approved by the relevant authorities. Areas are approximate measurements only and are subject to final survey. Plans are not drawn to scale and do not form part of the contract.



* Denotes mirror image

Area includes a/c ledge, balcony and void area (high ceiling). The plans are subject to change as may be required or approved by the relevant authorities. Areas are approximate measurements only and are subject to final survey. Plans are not drawn to scale and do not form part of the contract.



2-Bedroom (Premium)

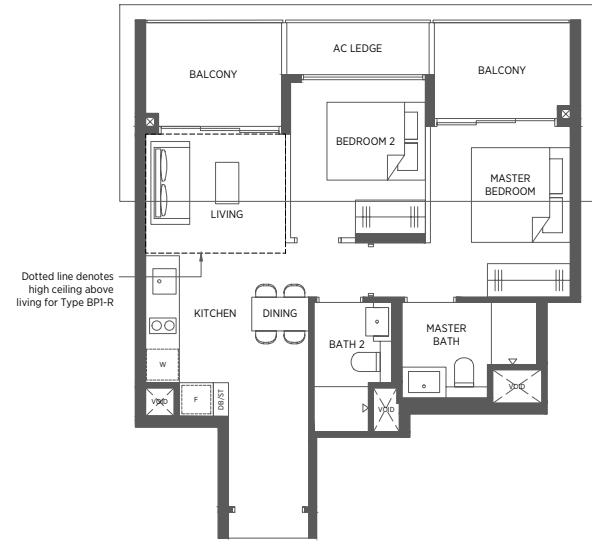
TYPE BP1 TYPE BP1-R

65 sq m | 700 sq ft 72 sq m | 775 sq ft

#02-40 to #17-40
#02-41 to #17-41*

#18-40
#18-41*

Incl. of 7 sq m | 75 sq ft of void area (high ceiling) above living



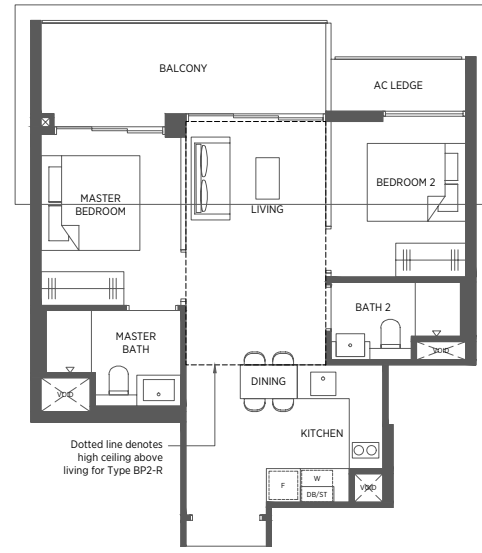
TYPE BP2 TYPE BP2-R

66 sq m | 710 sq ft 80 sq m | 861 sq ft

#02-49 to #17-49

#18-49

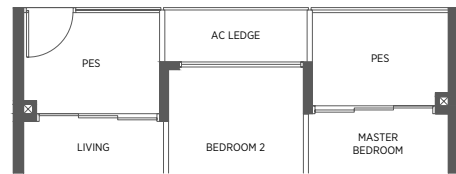
Incl. of 14 sq m | 151 sq ft of void area (high ceiling) above living



TYPE BP1-P

65 sq m | 700 sq ft

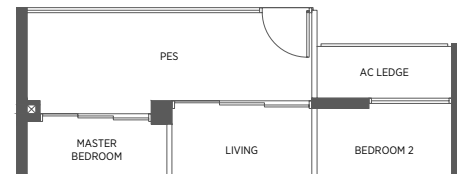
#01-40
#01-41*



TYPE BP2-P

66 sq m | 710 sq ft

#01-49



2-Bedroom (Premium)

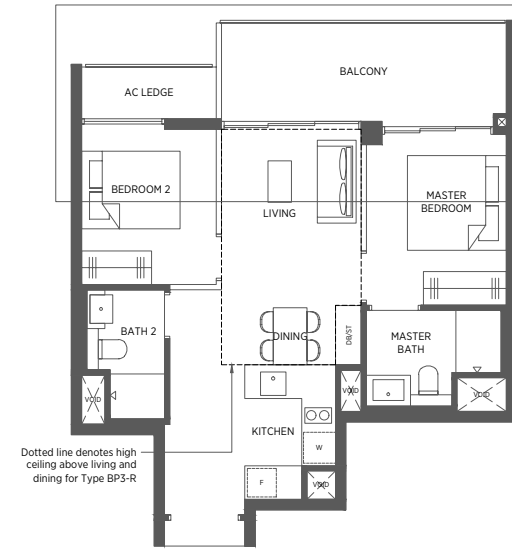
TYPE BP3 TYPE BP3-R

67 sq m | 721 sq ft 80 sq m | 861 sq ft

#02-48 to #17-48

#18-48

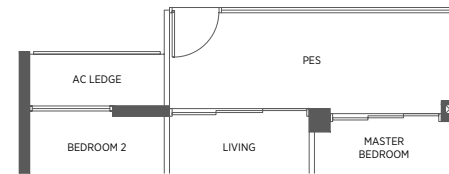
Incl. of 13 sq m | 140 sq ft of void area (high ceiling) above living & dining



TYPE BP3-P

67 sq m | 721 sq ft

#01-48



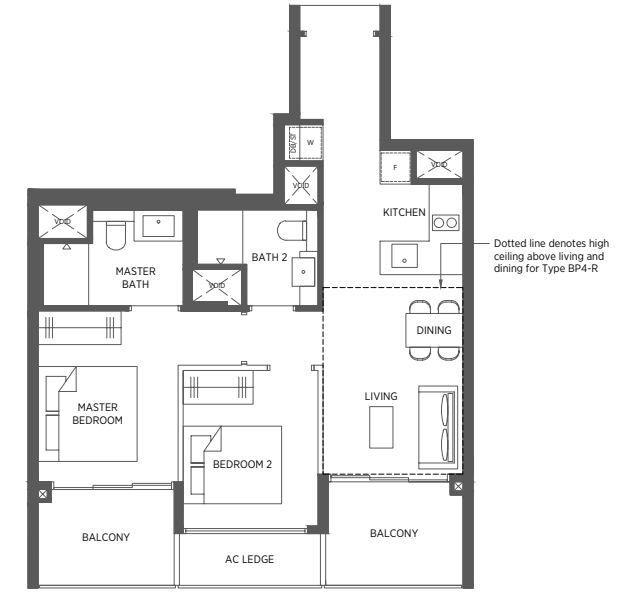
TYPE BP4 TYPE BP4-R

68 sq m | 732 sq ft 79 sq m | 850 sq ft

#02-70 to #17-70

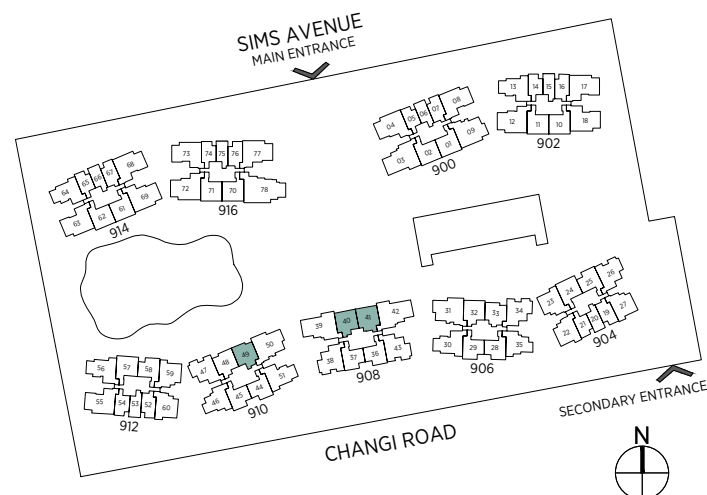
#18-70

Incl. of 11 sq m | 118 sq ft of void area (high ceiling) above living & dining

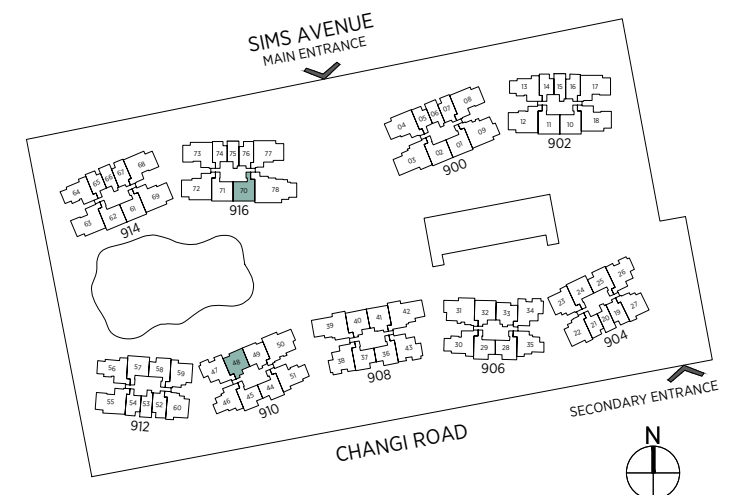


* Denotes mirror image

Area includes a/c ledge, balcony and void area (high ceiling). The plans are subject to change as may be required or approved by the relevant authorities. Areas are approximate measurements only and are subject to final survey. Plans are not drawn to scale and do not form part of the contract.



Area includes a/c ledge, balcony and void area (high ceiling). The plans are subject to change as may be required or approved by the relevant authorities. Areas are approximate measurements only and are subject to final survey. Plans are not drawn to scale and do not form part of the contract.



2-Bedroom (Premium)

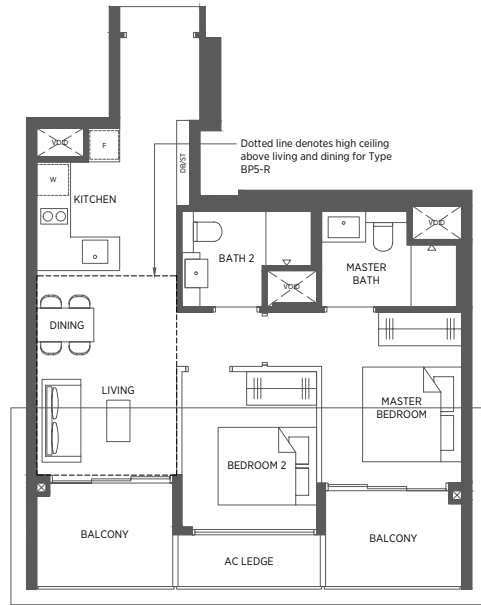
TYPE BP5 TYPE BP5-R

69 sq m | 743 sq ft 80 sq m | 861 sq ft

#02-01 to #17-01*
#02-02 to #17-02
#02-10 to #17-10*
#02-11 to #17-11
#02-57 to #17-57*
#02-61 to #17-61*
#02-62 to #17-62
#02-71 to #17-71

#18-01*
#18-02
#18-10*
#18-11
#18-57*
#18-61*
#18-62
#18-71

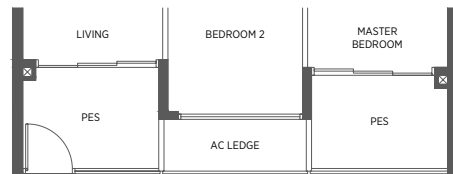
Incl. of 11 sq m | 118 sq ft of void area (high ceiling) above living & dining



TYPE BP5-P

69 sq m | 743 sq ft

#01-02
#01-11
#01-57*
#01-62
#01-71



2-Bedroom + Study

TYPE BD1 TYPE BD1-R

77 sq m | 829 sq ft 85 sq m | 915 sq ft

#02-35 to #17-35*
#02-46 to #17-46

#18-35*
#18-46

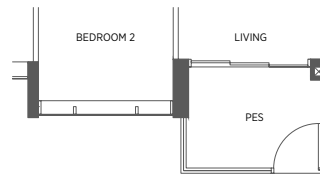
Incl. of 8 sq m | 86 sq ft of void area (high ceiling) above living



TYPE BD1-P

77 sq m | 829 sq ft

#01-35*
#01-46



2-Bedroom + Study

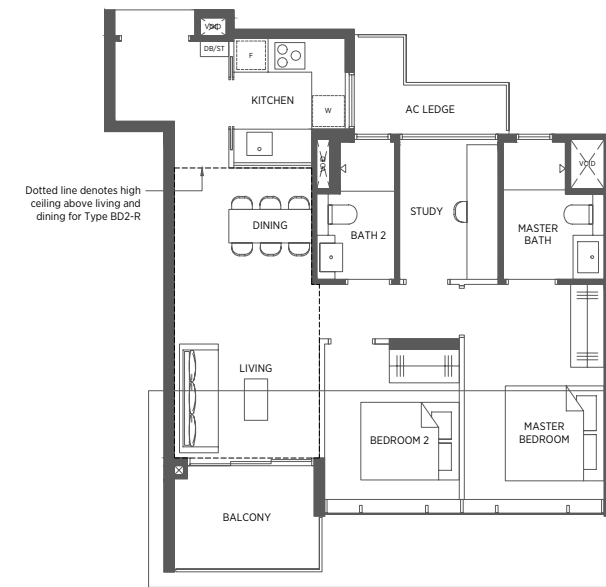
TYPE BD2 TYPE BD2-R

78 sq m | 840 sq ft 95 sq m | 1023 sq ft

#02-22 to #17-22*
#03-27 to #17-27
#02-60 to #17-60

#18-22*
#18-27
#18-60

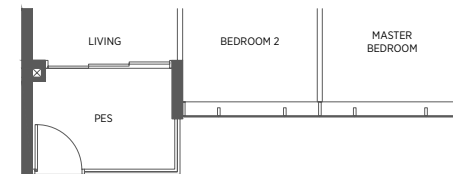
Incl. of 17 sq m | 183 sq ft of void area (high ceiling) above living & dining



TYPE BD2-P

78 sq m | 840 sq ft

#01-22*
#01-60



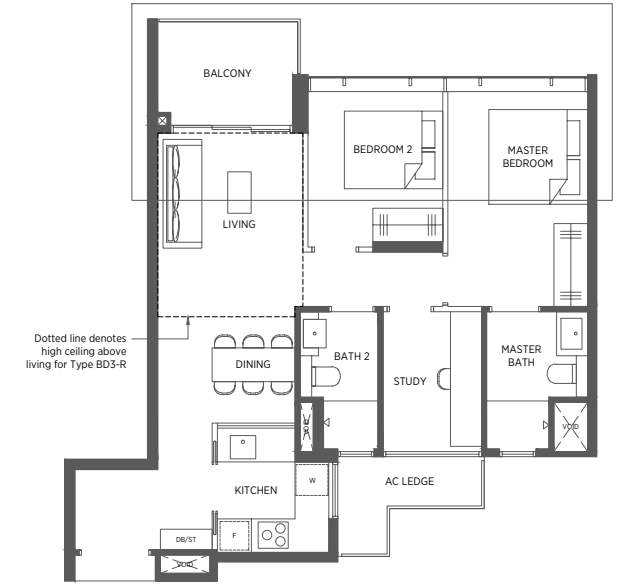
TYPE BD3 TYPE BD3-R

78 sq m | 840 sq ft 89 sq m | 958 sq ft

#02-23 to #17-23*
#02-59 to #17-59

#18-23*
#18-59

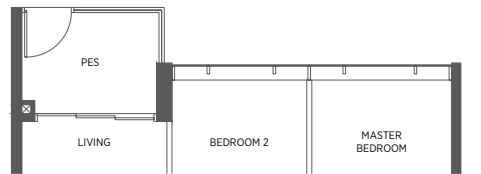
Incl. of 11 sq m | 118 sq ft of void area (high ceiling) above living



TYPE BD3-P

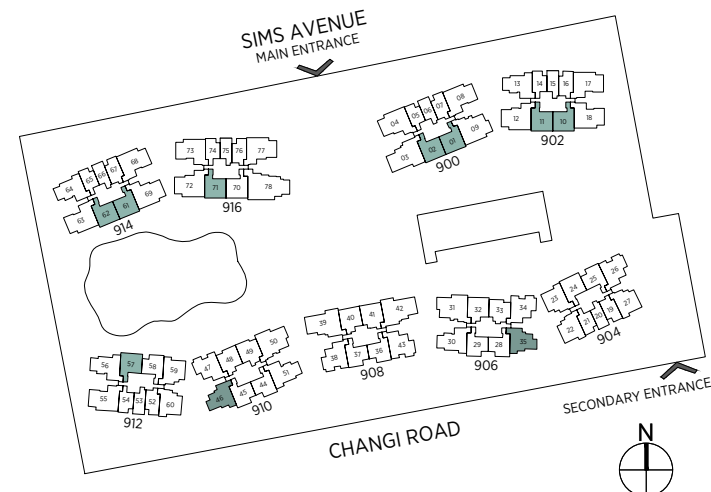
78 sq m | 840 sq ft

#01-23*
#01-59



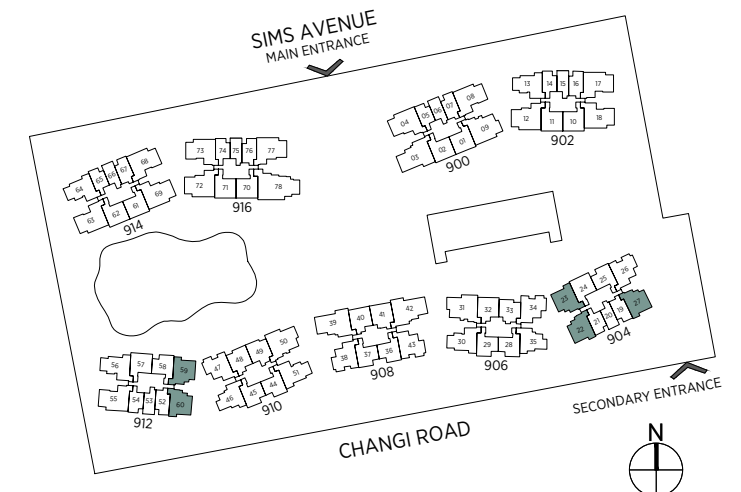
* Denotes mirror image

Area includes a/c ledge, balcony and void area (high ceiling). The plans are subject to change as may be required or approved by the relevant authorities. Areas are approximate measurements only and are subject to final survey. Plans are not drawn to scale and do not form part of the contract.



* Denotes mirror image

Area includes a/c ledge, balcony and void area (high ceiling). The plans are subject to change as may be required or approved by the relevant authorities. Areas are approximate measurements only and are subject to final survey. Plans are not drawn to scale and do not form part of the contract.

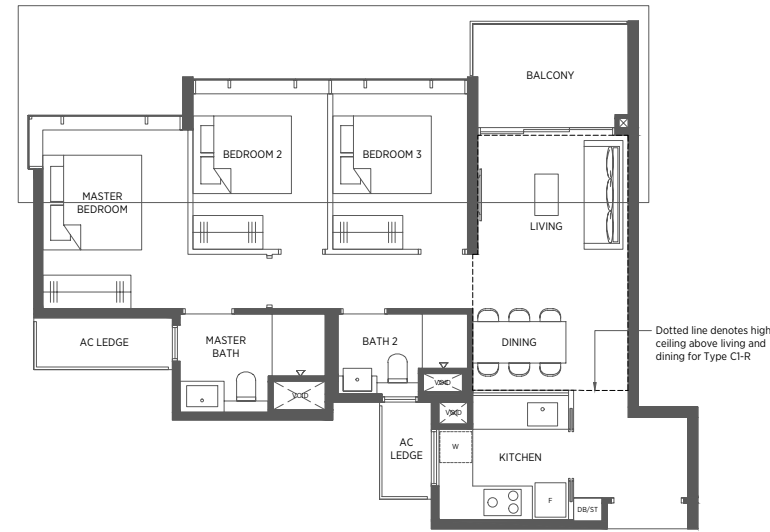


3-Bedroom

TYPE C1 84 sq m | 904 sq ft
TYPE C1-R 100 sq m | 1076 sq ft

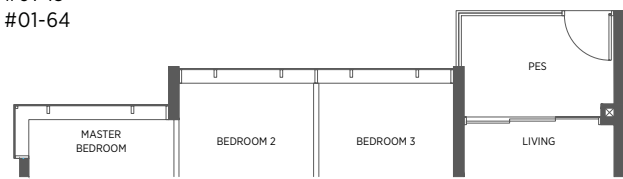
#02-13 to #17-13
 #02-64 to #17-64

Incl. of 16 sq m | 172 sq ft of void area (high ceiling) above living & dining



TYPE C1-P 84 sq m | 904 sq ft

#01-13
 #01-64

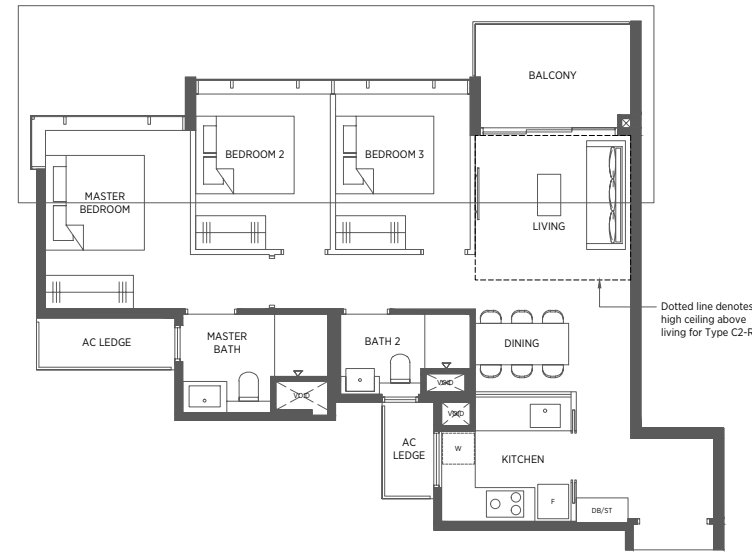


TYPE C2 85 sq m | 915 sq ft
TYPE C2-R 94 sq m | 1012 sq ft

#02-30 to #17-30*
 #02-51 to #17-51
 #02-56 to #17-56

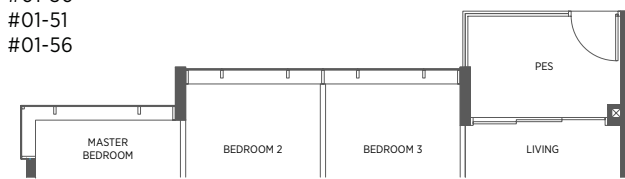
#18-30*
 #18-51
 #18-56

Incl. of 9 sq m | 97 sq ft of void area (high ceiling) above living



TYPE C2-P 85 sq m | 915 sq ft

#01-30*
 #01-51
 #01-56



3-Bedroom

TYPE C3 86 sq m | 926 sq ft
TYPE C3-R 98 sq m | 1055 sq ft
TYPE C3-R1 103 sq m | 1109 sq ft

#03-26 to #17-26*
 #02-34 to #17-34*
 #02-38 to #17-38*
 #02-43 to #17-43
 #02-47 to #17-47

#18-26*
 #18-38*
 #18-43

#18-34*
 #18-47

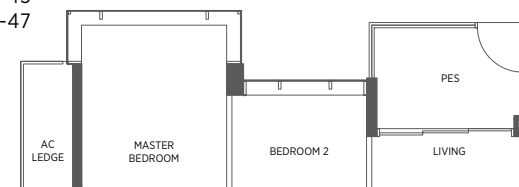
Incl. of 12 sq m | 129 sq ft of void area (high ceiling) above living

Incl. of 17 sq m | 183 sq ft of void area (high ceiling) above living & dining



TYPE C3-P 86 sq m | 926 sq ft

#01-34*
 #01-38*
 #01-43
 #01-47



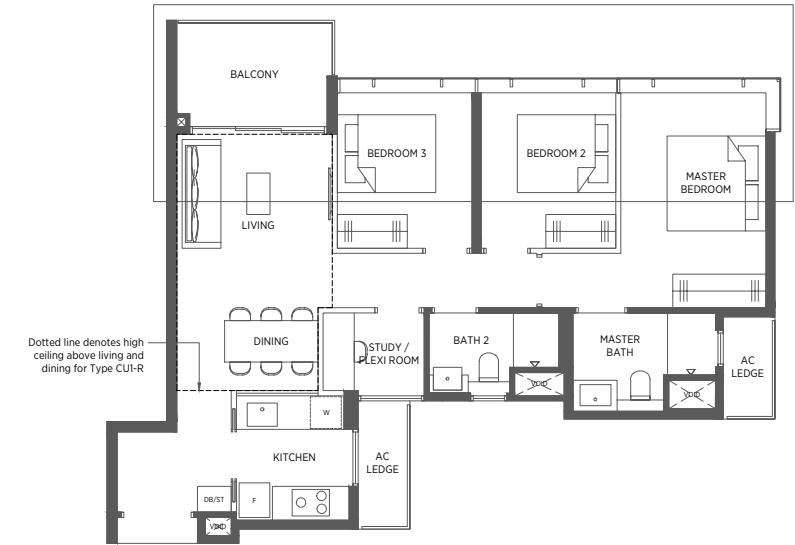
3-Bedroom + Study

TYPE CUI 89 sq m | 958 sq ft
TYPE CUI-R 104 sq m | 1119 sq ft

#02-08 to #17-08
 #02-17 to #17-17
 #02-55 to #17-55
 #02-68 to #17-68
 #02-73 to #17-73*

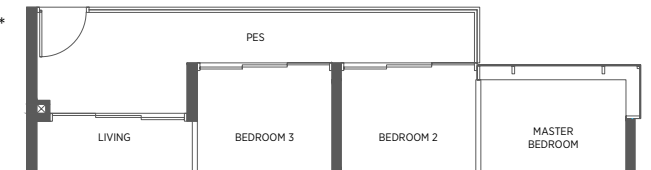
#18-08
 #18-17
 #18-55
 #18-68
 #18-73*

Incl. of 15 sq m | 161 sq ft of void area (high ceiling) above living & dining



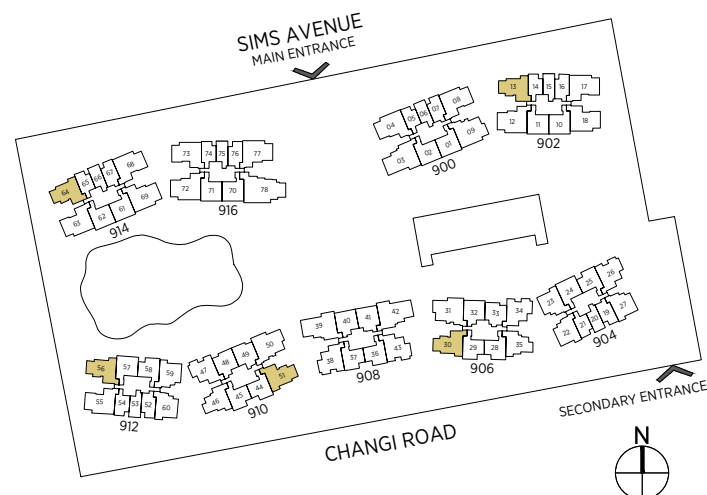
TYPE CUI-P 95 sq m | 1023 sq ft

#01-08
 #01-17
 #01-55
 #01-68
 #01-73*



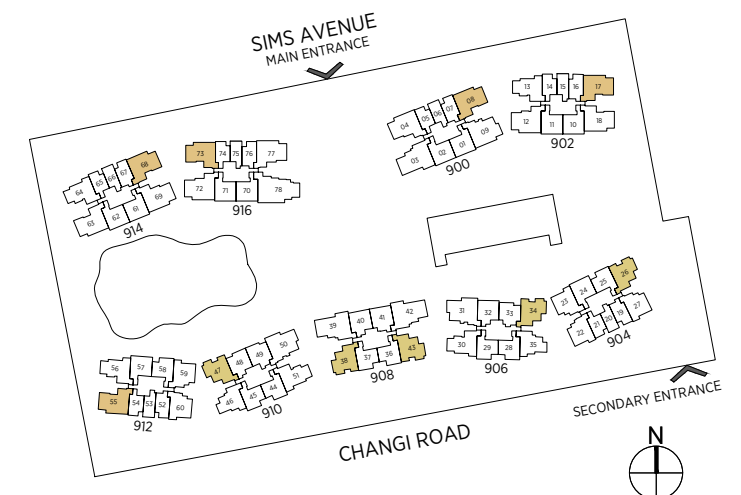
* Denotes mirror image

Area includes a/c ledge, balcony and void area (high ceiling). The plans are subject to change as may be required or approved by the relevant authorities. Areas are approximate measurements only and are subject to final survey. Plans are not drawn to scale and do not form part of the contract.



* Denotes mirror image

Area includes a/c ledge, balcony and void area (high ceiling). The plans are subject to change as may be required or approved by the relevant authorities. Areas are approximate measurements only and are subject to final survey. Plans are not drawn to scale and do not form part of the contract.



3-Bedroom + Study

TYPE CU2 TYPE CU2-R

93 sq m | 1001 sq ft 102 sq m | 1098 sq ft

#02-18 to #17-18*
#02-63 to #17-63

#18-18*
#18-63

Incl. of 9 sq m | 97 sq ft
of void area (high ceiling)
above living



3-Bedroom (Premium)

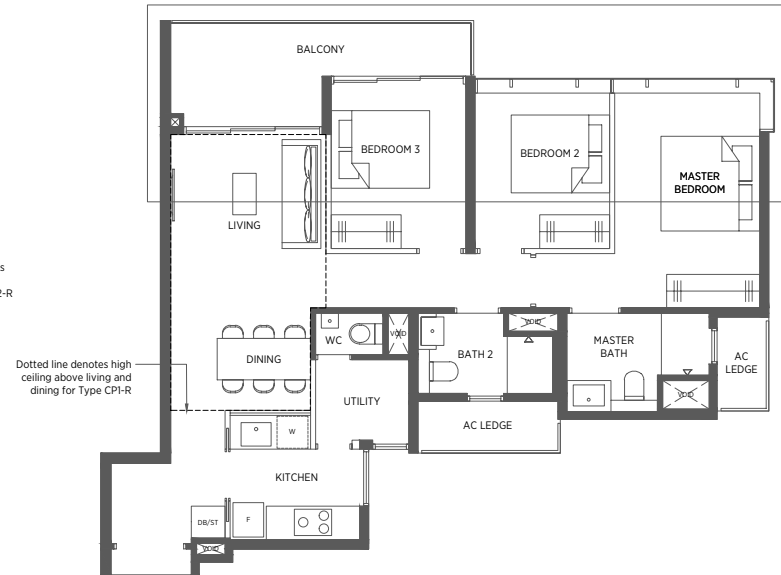
TYPE CP1 TYPE CP1-R

95 sq m | 1023 sq ft 112 sq m | 1206 sq ft

#02-04 to #17-04*
#02-77 to #17-77

#18-04*
#18-77

Incl. of 17 sq m | 183 sq ft
of void area (high ceiling)
above living & dining



3-Bedroom (Premium)

TYPE CP2 TYPE CP2-R

96 sq m | 1033 sq ft 107 sq m | 1152 sq ft

#02-12 to #17-12*
#02-69 to #17-69
#02-72 to #17-72*

#18-12*
#18-69
#18-72*

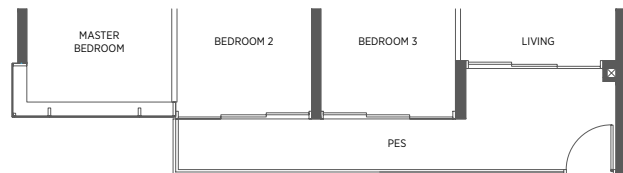
Incl. of 11 sq m | 118 sq ft
of void area (high ceiling)
above living



TYPE CU2-P

96 sq m | 1033 sq ft

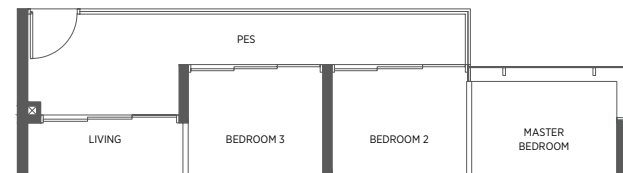
#01-18*
#01-63



TYPE CP1-P

98 sq m | 1055 sq ft

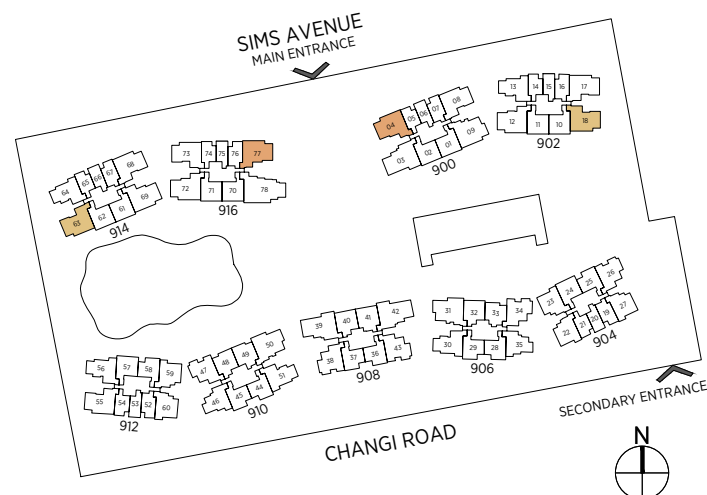
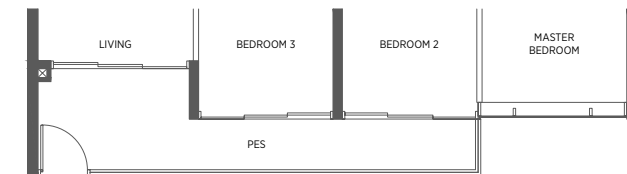
#01-04*
#01-77



TYPE CP2-P

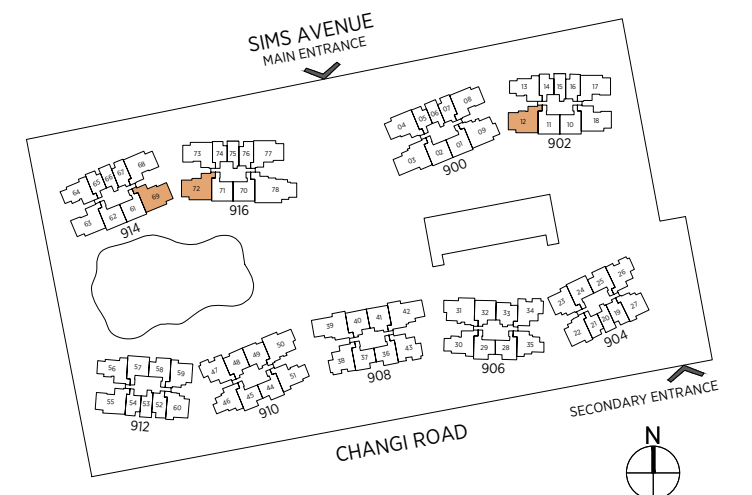
99 sq m | 1066 sq ft

#01-12*
#01-69
#01-72*



* Denotes mirror image

Area includes a/c ledge, balcony and void area (high ceiling). The plans are subject to change as may be required or approved by the relevant authorities. Areas are approximate measurements only and are subject to final survey. Plans are not drawn to scale and do not form part of the contract.



* Denotes mirror image

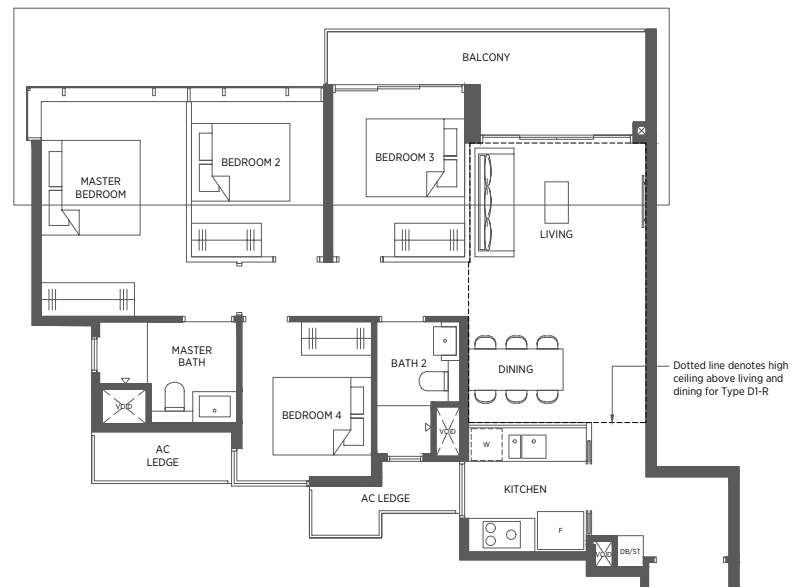
Area includes a/c ledge, balcony and void area (high ceiling). The plans are subject to change as may be required or approved by the relevant authorities. Areas are approximate measurements only and are subject to final survey. Plans are not drawn to scale and do not form part of the contract.

4-Bedroom

TYPE D1 104 sq m | 1119 sq ft
TYPE D1-R 124 sq m | 1335 sq ft

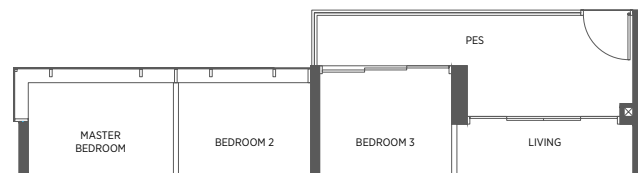
#02-31 to #17-31
 #02-50 to #17-50*
 #18-31
 #18-50*

Incl. of 20 sq m | 215 sq ft of void area (high ceiling) above living & dining



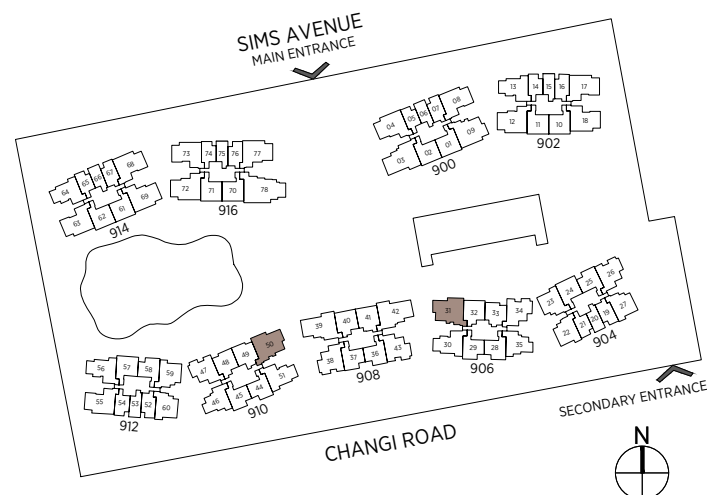
TYPE D1-P 104 sq m | 1119 sq ft

#01-31
 #01-50*



* Denotes mirror image

Area includes a/c ledge, balcony and void area (high ceiling). The plans are subject to change as may be required or approved by the relevant authorities. Areas are approximate measurements only and are subject to final survey. Plans are not drawn to scale and do not form part of the contract.

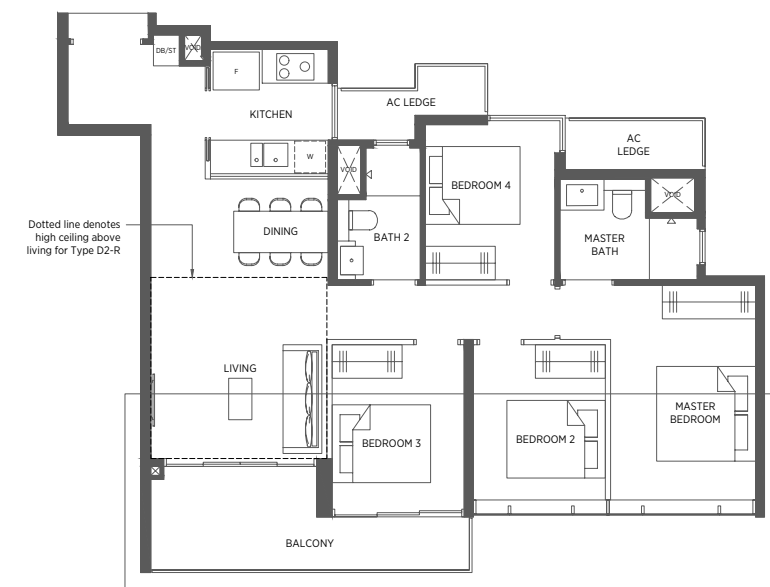


4-Bedroom

TYPE D2 104 sq m | 1119 sq ft
TYPE D2-R 117 sq m | 1259 sq ft

#02-09 to #17-09
 #18-09

Incl. of 13 sq m | 140 sq ft of void area (high ceiling) above living

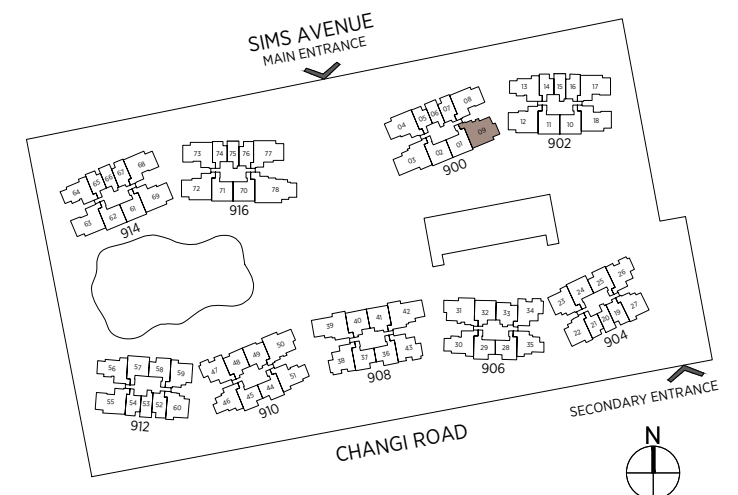


TYPE D2-P 107 sq m | 1152 sq ft

#01-09



Area includes a/c ledge, balcony and void area (high ceiling). The plans are subject to change as may be required or approved by the relevant authorities. Areas are approximate measurements only and are subject to final survey. Plans are not drawn to scale and do not form part of the contract.



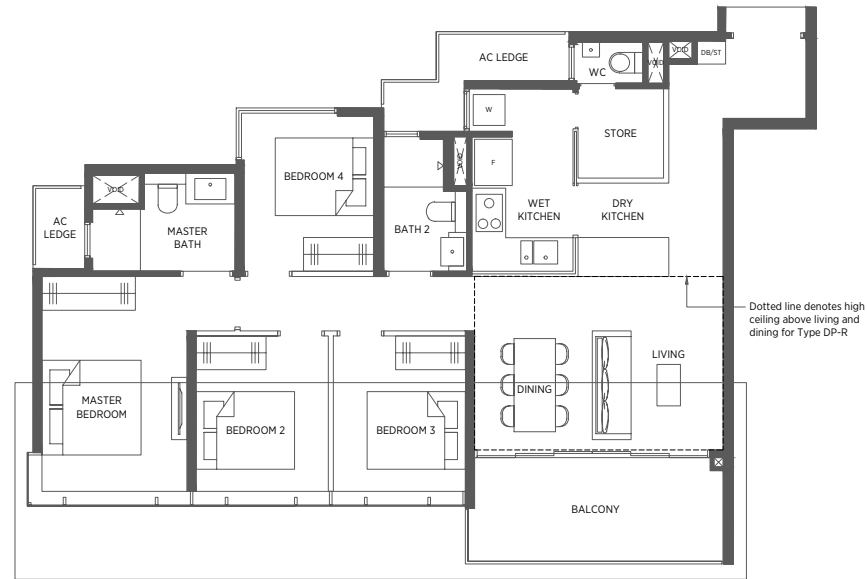
4-Bedroom (Premium)

TYPE DP TYPE DP-R

114 sq m | 1227 sq ft 131 sq m | 1410 sq ft

#02-03 to #17-03 #18-03
 #02-39 to #17-39* #18-39*
 #02-42 to #17-42 #18-42

Incl. of 17 sq m | 183 sq ft of void area (high ceiling) above living & dining



TYPE DP-P

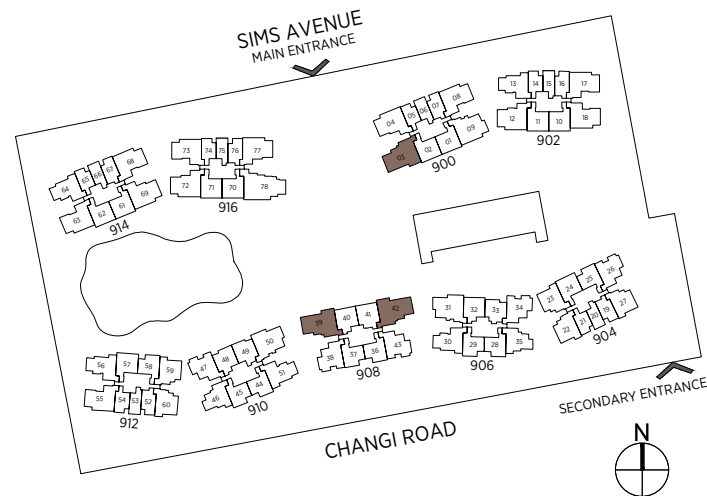
114 sq m | 1227 sq ft

#01-03
 #01-39*
 #01-42



* Denotes mirror image

Area includes a/c ledge, balcony and void area (high ceiling). The plans are subject to change as may be required or approved by the relevant authorities. Areas are approximate measurements only and are subject to final survey. Plans are not drawn to scale and do not form part of the contract.



5-Bedroom

TYPE E TYPE E-R

130 sq m | 1399 sq ft 149 sq m | 1604 sq ft

#02-78 to #17-78 #18-78

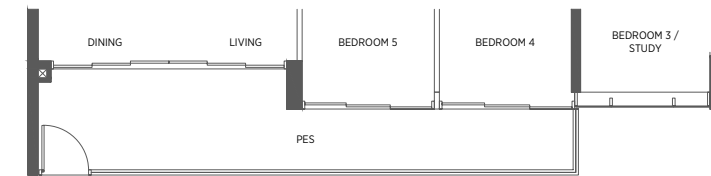
Incl. of 19 sq m | 205 sq ft of void area (high ceiling) above living & dining



TYPE E-P

137 sq m | 1475 sq ft

#01-78



Area includes a/c ledge, balcony and void area (high ceiling). The plans are subject to change as may be required or approved by the relevant authorities. Areas are approximate measurements only and are subject to final survey. Plans are not drawn to scale and do not form part of the contract.

